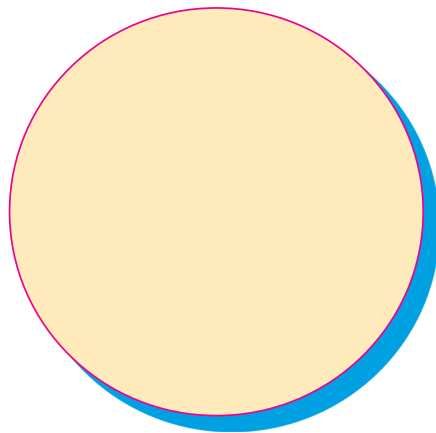
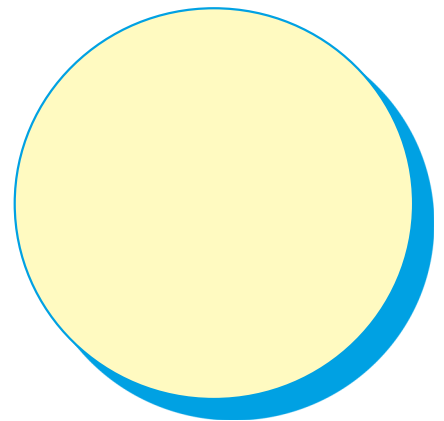
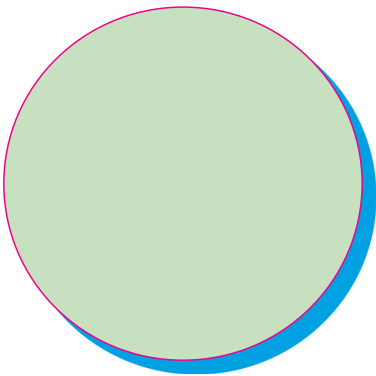
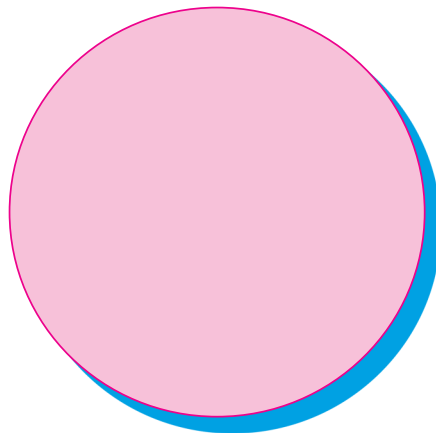
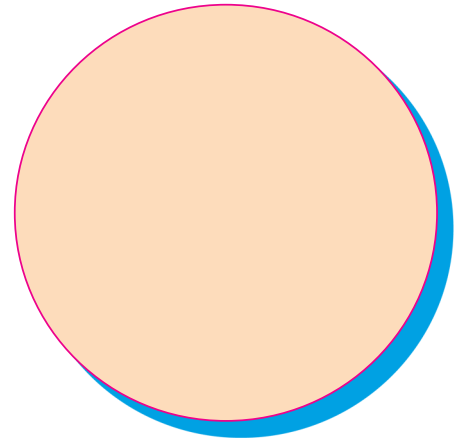
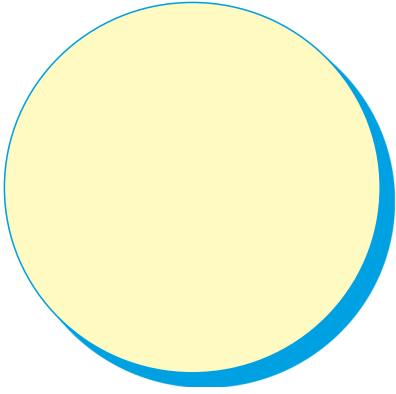
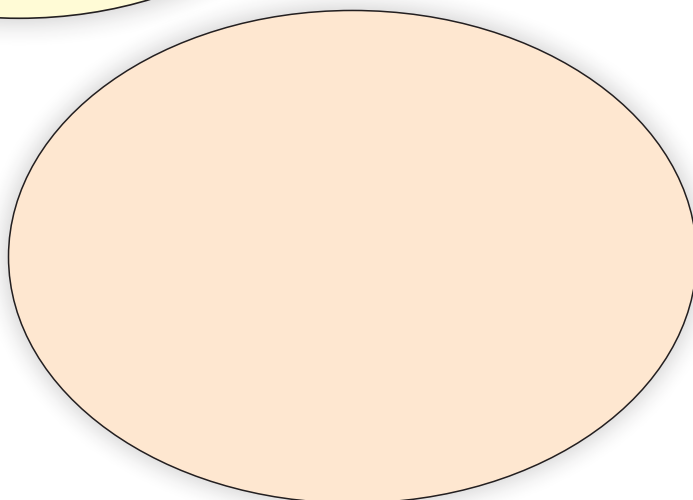
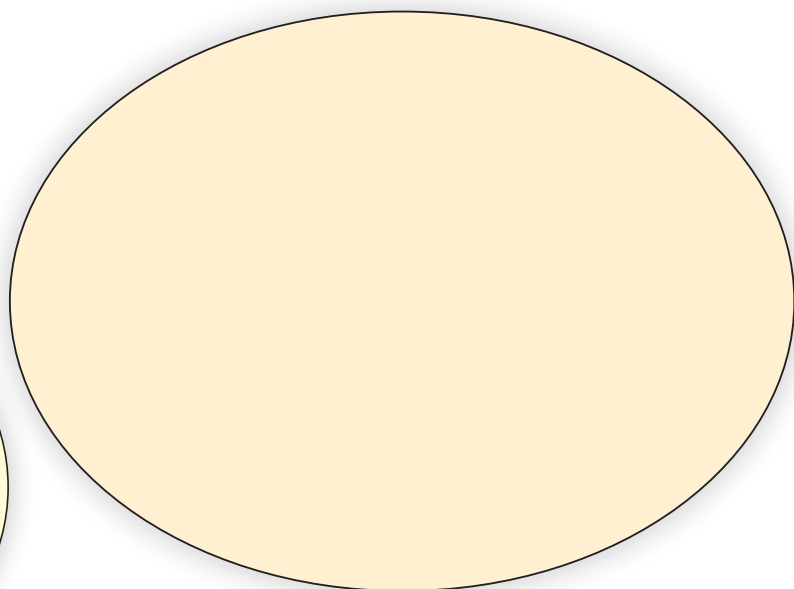
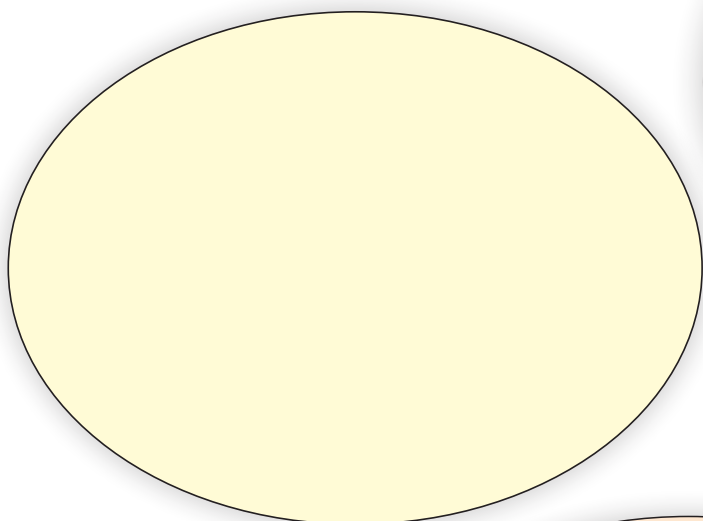


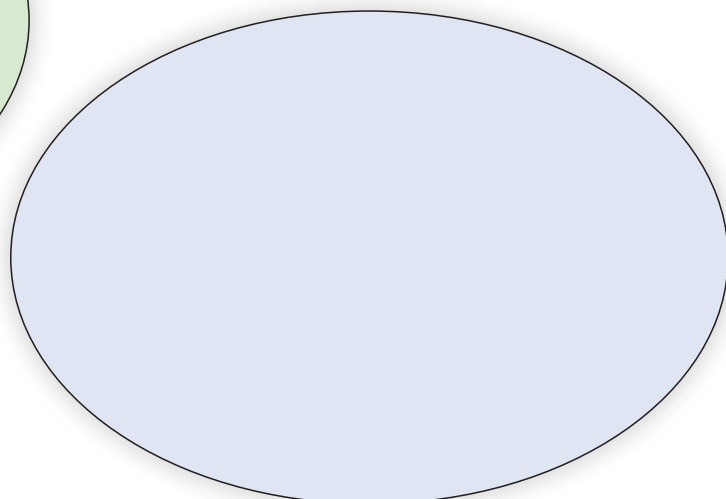
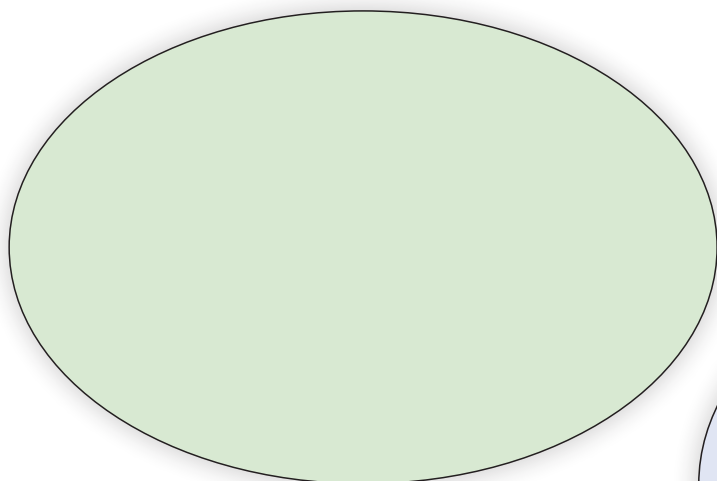
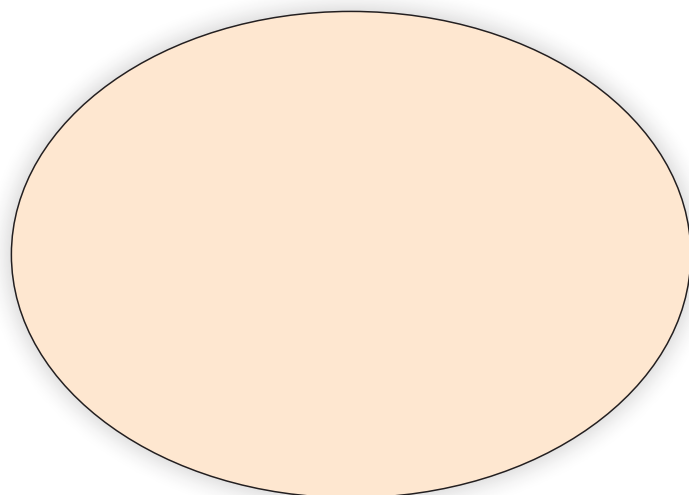
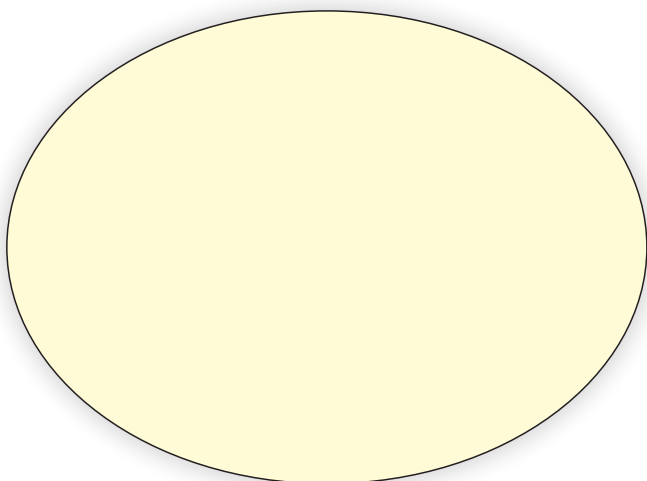
EMPATIA



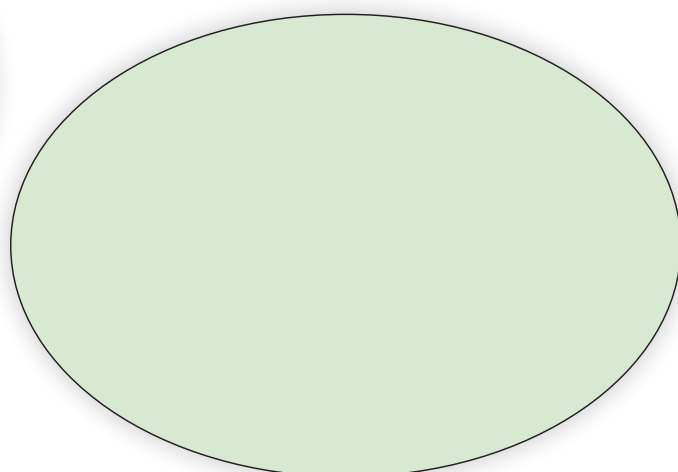
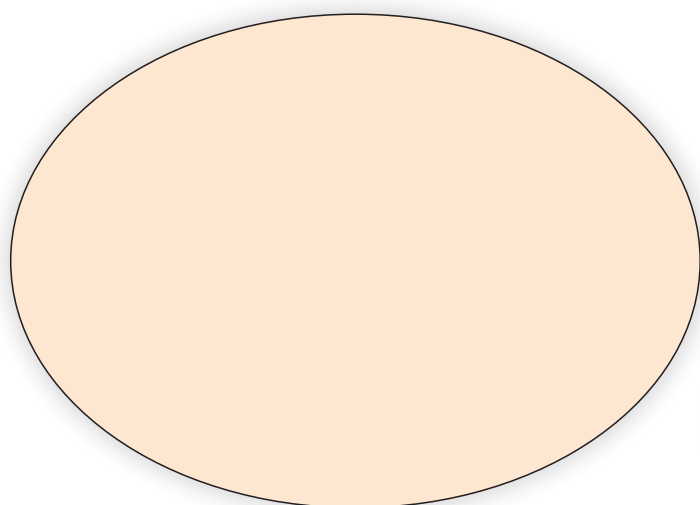
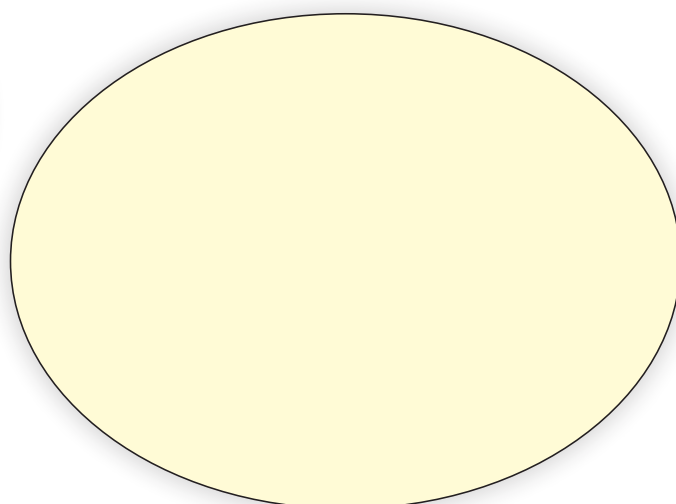
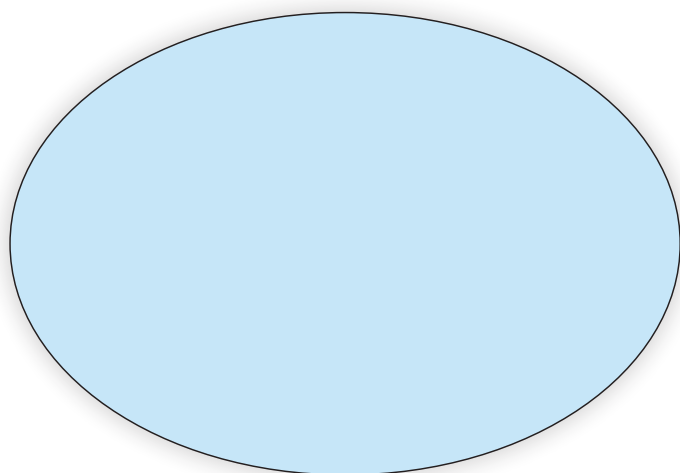
Boża empatia = miłosierdzie



**Jakich określeń i obrazów z ludzkiego życia używa papież,
aby zilustrować prawdę o Bożym miłosierdziu?**



Jak mamy rozumieć i realizować w praktyce miłosierdzie





**„Umiłowani, jeśli Bóg tak nas
umiłował, to i my winniśmy się
wzajemnie miłować” (J 4,11).**